

Healing with
BIOPTRON
Hyperlight Colour
Therapy

A UNIQUE SYNERGY OF
COLOUR'S ENERGIES & FREQUENCIES
FOR MAINTAINING AND RESTORING
OUR HEALTH & BEAUTY



BIOPTRON[®] 
HYPERLIGHT THERAPY SYSTEM By Zepher Group

TESTIMONIALS

STRESS

“I often have heart palpitations that are related to the daily stress at home and at my work. Then I feel anxious and exhausted. Once upon a time, one therapist told me to practice BIOPTRON Green Colour Light therapy, and since then, BIOPTRON is my favorite rejuvenating remedy! I am using it as a first aid in those panic-situations, applying it on my chest for 20 minutes. After the treatment, I feel stress-free. My heart rate slows down to normal, I get relaxed, and the energy and vitality comes back to me. In one word: I feel reborn!”

Zoe W.

SKIN

“I was diagnosed with eczema on my skin. My belly was entirely covered with horrible looking red dots. I thought my skin will remain in this way forever. I went to the GP and he advised me to keep my skin moisture and fat - to use Vaseline, so the skin will be smooth, but after one week, the rash was not disappearing. My girlfriend is a yoga teacher and she uses BIOPTRON for holistic healing, so she advised me to expose my skin to the BLUE BIOPTRON Light. I treated my skin with such BLUE light during 3 days, 3 times per day. The fourth day, my skin was again totally healthy. Awesome. I got in love with this stuff!”

Mark M.





PAIN

“This is my dog Djina. She is 12 years old and since 2 years ago, she suffers from arthritis. Mostly she is just lying in her bed, not playing and not being in the mood for company. A year ago, my husband wanted to put her down. For me, this was a real shock! I could not expect it that she will be dead. Well, I have got an idea how I might help her to be free from pain and to prolong her life. I have BIOPTRON RED Light that I use for myself and for the whole family - as a pain relief. So, I thought if we humans can use it and it helps, it could help our dog Djina. And I did! I treated her only two times and after those treatments, Djina stood up, and she became more cheerful, she was not anymore in pain! I am using the whole 7 colours for various cures and I am more and more conscious that those BIOPTRON Colour Lights are just a wonder...”

Josephine G.P.



- Swiss-made, medical device in compliance with EU directive 42/93/EEC
- Medically approved
- Clinically tested (≥ 200 studies)
- FDA (510 (k)) cleared for the US market
- Registered as a medical device in Australia (TGA certificate) and Canada (HC certificate)
- Over 3 million devices in use worldwide
- Established on 5 continents in more than 60 countries
- 30 years of presence on the global market



BIOPTRON is the winner of the award for the best anti-ageing treatment - Aesthetic and Anti-Aging Medicine European Congress in Paris, 2014.

BIOPTRON MEDICAL DEVICE



BIOPTRON® Hyperlight has been accepted as a unique form of treatment, DISEASE PREVENTION, THERAPY and RECOVERY for various medical indications and health issues, with a wide range of applications for our health, beauty and well-being:

- WOUND HEALING
- PAIN RELIEF
- DERMATOLOGICAL DISORDERS
- DEPRESSION AND SEASONAL AFFECTIVE DISORDERS (SAD)
- PEDIATRICS
- DENTISTRY
- VETERINARY CARE
- ANTI-AGEING...

... And, in the alternative medicine branch, BIOPTRON Colour Hyperlights are efficaciously in use for the wellbeing cures for **nervousness, sleeping disorders, migraine, heart palpitations or regulating impotency problem in male (through improving vasodilatation) and optimizing female PMS concerns through hormone secretion regulation etc.**

All over the world, in reputable hospitals and institutions, wellness and sports centers, health professionals are using BIOPTRON® Hyperlight Colour Therapy and are reporting the significant improvements while treating patients who suffer from various medical conditions.

BIOPTRON® HYPERLIGHT COLOUR THERAPY FEATURES:

BIOPTRON's patented and unique combination of light features stimulates and accelerates healing and recovery:



POLARIZED

VERTICALLY LINEAR POLARIZED LIGHT (VLPL)

- The Brewster's Optical Unit (a multi-layered optical system), provides **95% of BIOPTRON Light's polarization**.
- BIOPTRON VLPL waves propagate on **parallel planes**; which ensure optimal penetration through tissues.
- Such Linearly Polarized Light ideally restores and maintains the bio-processes in the body to its natural linear state. VLPL enhances the healing processes and stimulates the immune system for faster and more effective healing.



POLYCHROMATIC

POLYCHROMATIC LIGHT (VARIOUS COLOURS 480-3400 nm)

- A broad range of **wavelengths** from 480 to 3400 nm, containing the colour range of visible light wavelengths plus a part of the infrared spectrum.
- Different light wavelengths penetrate the skin at different depths, activating cells, accelerating blood circulation and stimulating the whole body's regenerative processes.

UV FREE. No risk of adverse effects.



INCOHERENT

INCOHERENT LIGHT

BIOPTRON incoherent light contributes to faster, safe, painless and effective healing because of the following characteristics:

- Soft, low intensity light
 - Dynamic penetration
- No known side effects and no risk of damaging tissues!*



LOW ENERGY

LOW-ENERGY LIGHT

- Consistent & steady intensity of 2.4J/cm² per minute which represents safe dose of light

A precise phototherapy dosage that stimulates the natural healing processes.

BIOPTRON HYPERLIGHT COLOUR THERAPY



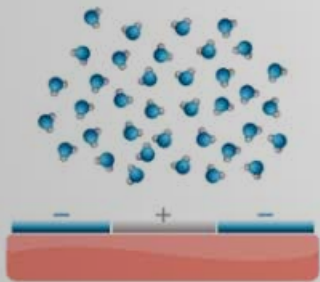
The treatments in this brochure, were carefully designed by **Olja Lopushansky** (on the photo) - holistic and chromotherapy-light puncturist and BIOPTRON Nederland director. Ms. Lopushansky has combined her holistic and scientific knowledge, and professional experience, based on quantum-diagnostic experiments.

“In order to create the most successful light-therapy treatments, she cooperated with various experts: doctors, physicists, esoteric-therapists and quantum mechanical engineers. The treatments in this brochure are displayed in a simple way and they could be easily performed by health professionals or at home, therefore they are FOR EVERYONE: **each of us could give a treatment and each of us could be treated!**”

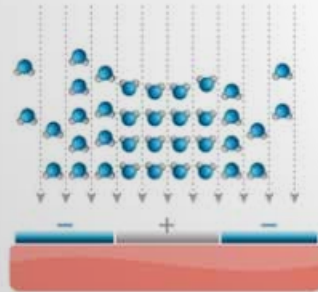
HEALTHY BODY WATER = HEALTHY ORGANISM

BIOPTRON Colour Hyperlight Therapy could maintain and restore our body water.

Due to the body's natural ageing process diseases, the natural healthy state in biological structures becomes unordered, accelerated ageing; causing continued illnesses. When disordered and unhealthy, VLPL with its linearly arranged photons assists in the regulation of the body's water and dipole moments of biomolecules and the processes that are linearly determined (for example, linear order of water in the body - through dipole moments or collagen fibers). Thus, VLPL due to its linear organization returns all biological processes to their optimal functional state.



1) Unordered water-molecules, indicating unhealthy body water, thus, imbalance and/ or unhealthy body.



2) After 15 min. of BIOPTRON Vertically Linearly Polarized Light exposure, the water molecules become ordered, representing the healthy body water, thus the healthy body

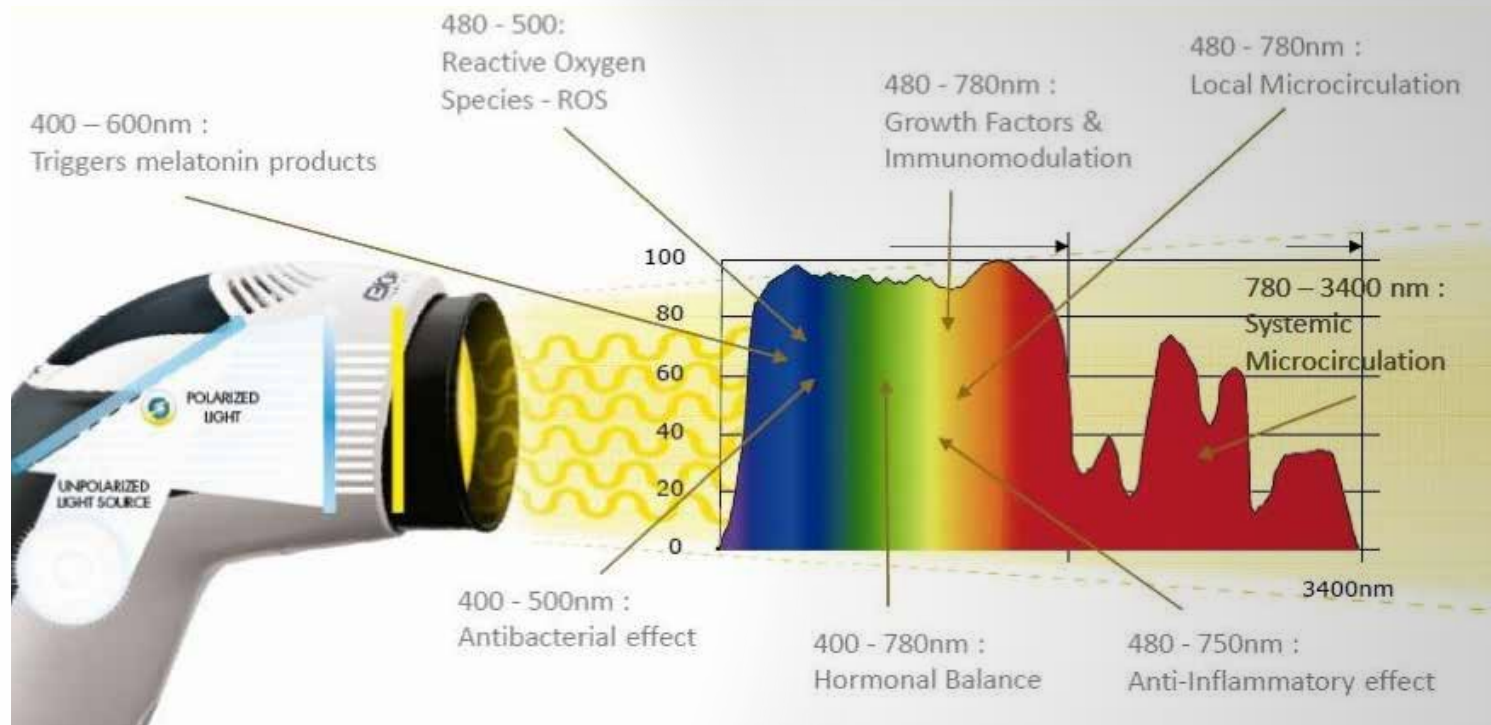


All biological structures in normal functional state are linearly arranged such as microtubules (microscopic view above), liquid crystals, collagen, lipids in membranes, internal mitochondrial arrangement and linear organization of dipole moments of water.



Since the human body consists of about 70 % of body water, BIOPTRON Vertically Linearly Polarized Light could ideally restore and maintain the body water structure to its natural linear state, enhancing the healing processes (See page nr.: 30, ref.: 2,3, 4 & 5).

BIOPTRON HYPERLIGHT COLOUR THERAPY REJUVENATES AND BALANCES THE ENTIRE BODY-SYSTEM



BIOPTRON healing wavelengths

Light and colour have been investigated as medicine since 2000 BC. Phototherapy (light therapy) and Chromotherapy (healing with colours) were practiced in ancient civilizations in Egypt, Greece, China and India.

According to the *Chromotherapy knowledge*, the human body consists of colours and its particular energies and frequencies. When various organs in the body deviate from these expected optimal vibrations, the body is either diseased or at least not functioning properly.

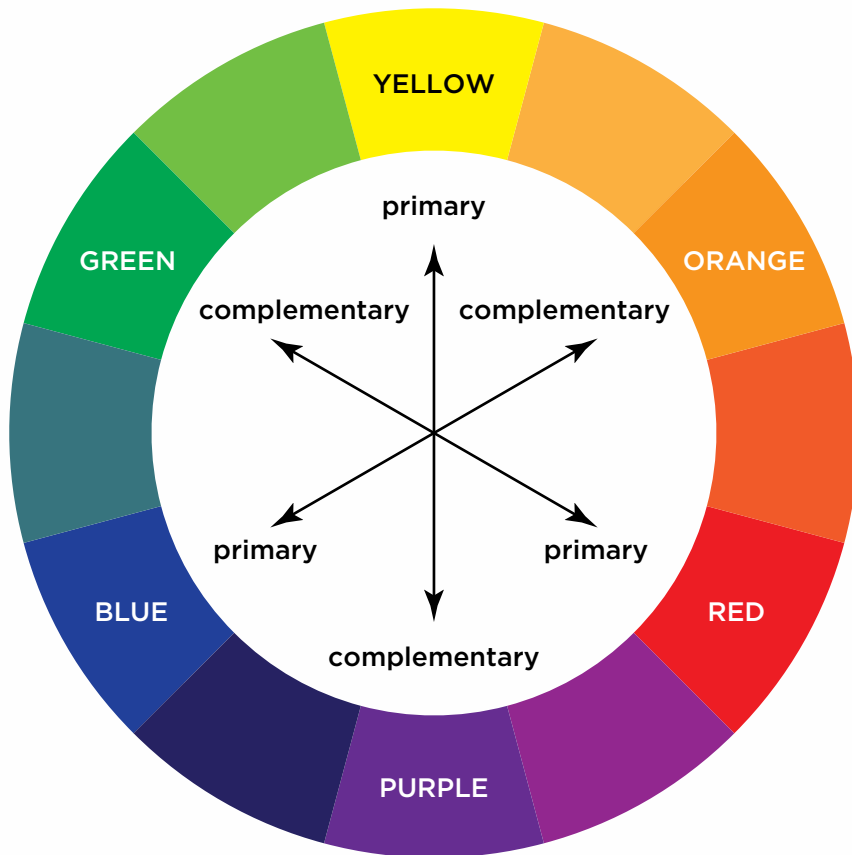
BIOPTRON monochromatic lights generate adequate electrical impulses and magnetic currents or energy fields that are prime activators of the biochemical and hormonal processes in the human body. The 7 monochromatic lights and its various energies and quantum information stimulate or sedate, **restoring our entire organism, bringing it into natural healthy state.**

BIOPTRON MONOCHROMATIC FILTERS/ LIGHTS FOR DISEASE PREVENTION, THERAPY AND RECOVERY!



BIOPTRON's scientists developed the unique Hyperlight Colour Therapy with interchangeable set of 7 filters whose characteristics make it effective in treating specific health conditions. BIOPTRON Colour Filters let only pass the desired part of the light spectrum, reflecting the remaining light as monochromatic light. Such unique monochromatic lights are designed for positive local and systemic healing (See ref. 1-5, page nr. 30).

LIGHT & COLOUR BLENDS FOR THE UTMOST BENEFICIAL WELL-BEING CURES



Almost each *Hyperlight Chromotherapy* treatment includes primary colour, complementary colour, GREEN Hyperlight or WHITE Hyperlight:

- A particular **primary colour** exposure is related to and treats a particular medical condition. For example, ORANGE Hyperlight is recommended as a primary colour for treating sexual hormonal system.
- Adding the complementary colour ensures ideal energy balance in the body (the complementary colour of ORANGE HL is BLUE HL. For information, see the colour chart, on the left).
- Due to its unprecedented medical and healing properties, BIOPTRON GREEN Hyperlight is often used prior to the application of other colours to enhance the healing process.
- BIOPTRON WHITE Hyperlight assists in almost each exposure. Due to its specific electromagnetic radiation (the wavelength 400-700 nm), it's penetrating the quantum information of all 7 colours, adding into the body the particular colour frequency or reducing it, where necessary, thus rebalancing disturbed energies and frequencies in the whole organism.

*This professional Chromotherapy concept, could help you to restore and **rejuvenate your organism quickly and without side effects.***

MEDICAL BIOPTRON HYPERLIGHT FILTER - RED

(WAVELENGTH INTERVAL 625-740 nm)

BIOPTRON RED Hyperlight (RED VLPL) stimulates, energizes and improves our vitality. It greatly speeds healing, stimulating production of ATP adenosine triphosphate (our energy), important for healthy body processes, increasing DNA synthesis for cellular reproduction and the repair of damaged cells.

RED HYPERLIGHT THERAPY MIGHT HELP IN FOLLOWING:

AS PAIN SUPPRESSANT

RED VLPL activates the analgesic systems of the brain, deeply decreasing pain. The effects are:

- Increased deep circulation and cell bio stimulation
- Reduced oxidative stress, with significantly lowered joint pain and sciatica
- Decreased pain transmission by direct action on peripheral nerves
- Significant pain reduction in rheumatic complaints, arthritis, arthrosis, arthralgia, neuropathy and circulatory disorders (Raynaud's disease, winter hands / toes)

BIOPTRON RED HYPERLIGHT TREATMENT:

Expose the painful zone two times a day, with the duration of 20 minutes.



- RED light therapy was made popular thanks to NASA:*
- keeping healthy bones and muscles of astronauts at zero gravity.
 - effectively analgesia remedy in cancer patients - reducing the painful radiation / chemotherapy side effects.
- (Info: www.nasa.gov)*



RED HYPERLIGHT - THE BEST NATURAL ANTI AGEING REMEDY

BIOPTRON RED Hyperlight accelerates the regeneration and improves skin condition in anti-ageing aesthetic treatments. It reduces wrinkles and improves skin elasticity resulting in radiant, healthy skin.

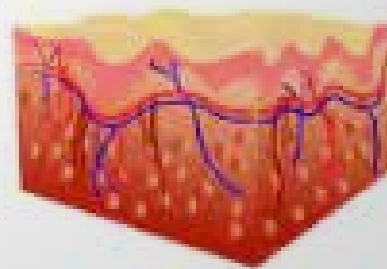
- Improves blood flow through the skin tissues and therefore the transportation of oxygen and nutrients to cells.
- Increases protein synthesis (production of collagen and elastin), boosts collagen formation to help smoothing wrinkles, helping the skin to maintain its moisture and retain its elasticity.
- Regenerates the skin to a visibly youthful appearance (firmer skin and reduced traces of ageing).

BIOPTRON RED HYPERLIGHT EXPOSURE:

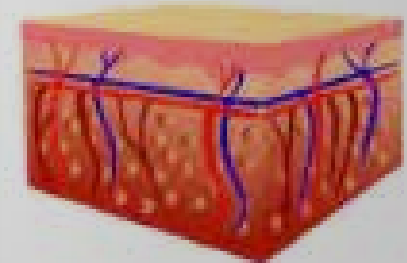
2 x a day GREEN HL 3 min, RED HL 9 min, GREEN HL 3 min.

CAUTION: Avoid RED HL in case of hypertension.

In couperose condition, for the best results apply RED 3 minutes and GREEN 12 minutes.



a)
*Facial skin before BIOPTRON Red Hyperlight exposure
Loss of elasticity, visible wrinkles: the skin looks unhealthy and old.*



b)
*Facial skin after BIOPTRON RED Hyperlight exposure is resulting in firmer skin condition, so **the skin looks younger and better.***

BIOPTRON HYPERLIGHT FILTER - ORANGE

(WAVELENGTH INTERVAL 590-635 nm)

ORANGE HYPERLIGHT THERAPY COULD HELP IN
FOLLOWING:

BETTER COGNITIVE ABILITIES & BETTER WORK PERFORMANCE

Improves concentration, empowers concentration in learning disorders, improves memory, helps with lack of focus and attention disorder (ADD), increases alertness in working hours, resulting in better work performance.

BIOPTRON ORANGE HYPERLIGHT EXPOSURE:

Treatment: a daily face exposure to ORANGE HL 10 min, in combination with its complementary colour - BLUE HL 10 min. Those light exposures should be done only in the morning hours, due to the proper Circadian Rhythm regulation.



*Gilles Vandewalle (University of Liège, Belgium) and Howard Cooper (French National Institute of Health and Medical Research in Bron) discovered that volunteers exposed to orange light had more activity in the prefrontal cortex, which is involved in a **higher cognitive function**.*





HORMONAL DYSFUNCTIONS REGULATION

- Fortifies the **sexual hormonal system** - regulating reproductive gland hormone secretion (testes in men; ovaries in women)
- Improves vasodilatation and **enhances sexual functions**
- **Aphrodisiac properties**
- Balances the urogenital system and kidney ailments

Hormonal balance Treatment combines Orange Hyperlight (the primary colour for this treatment) with its complementary colour - Blue Hyperlight. Alternating **Orange and Blue light has been used to balance the sexual hormonal system.**

BIOPTRON HYPERLIGHT EXPOSURE ON AFFECTED AREA:

Treatment: 1. Exposure on the pubic bone: WHITE HL, 3 min, ORANGE HL 6 min, BLUE HL 1 min. **2.** Exposure on lower back, sacral area: ORANGE HL 6 min, BLUE HL 1 min, WHITE HL 1 min.

VASOMOTRICITY PROPERTIES

- Influences musculoskeletal system, relieving muscle spasms and cramps, including menstrual cramps- Reduces muscle spasms after sport and physical activities
- Builds muscles, bones and other tissues

BIOPTRON HYPERLIGHT EXPOSURE:

Treatment: 2 x per day on the desired area: ORANGE HL 9 min, BLUE HL 3 min, ORANGE HL 3 min.

CRESCENT LACTATION

(stimulates mother milk production)

BIOPTRON HYPERLIGHT EXPOSURE ON BREASTS:

Treatment: WHITE HL 3 min, ORANGE HL 6 min, BLUE HL 1 min, WHITE HL 3 min.

BIOPTRON HYPERLIGHT FILTER - YELLOW

(WAVELENGTH INTERVAL 560-590 nm)

Since ancient times, yellow, as the colour of the sun is associated with energy, life-force and vitality.

Yellow hyperlight therapy might help in following:

AS DIGESTIVE STIMULANT

Balances the digestive system - the intestines, liver, gallbladder, pancreas, spleen and stomach:

- Relieves gas and soothes irritable bowels
- Speeds up the digestion and food assimilation
- Helps with diabetes regulation AS LYMPHATIC STIMULANT
- Activates the lymphatic system
- Stimulate lymph drainage

AS DETOXIFIER

- Stimulates and helps cleanse with an eliminative action on the liver, intestines

BIOPTRON HYPERLIGHT TREATMENT ON SOLAR PLEXUS:

Exposure to GREEN HL 3 min, YELLOW HL 10 min, PURPLE HL 1 min, GREEN HL 1 min.



BIOPTRON HYPERLIGHT FILTER - GREEN

(WAVELENGTH INTERVAL 520-560 nm)



BIOPTRON HYPERLIGHT TREATMENT FOR STRESS-REDUCTION, BETTER IMMUNITY AND THE HEALTHIER LIFE!

Due to its balancing properties, GREEN colour is called “The master of the Chromotherapy”.

Green Hyperlight therapy might help in following:

AS IMMUNE SYSTEM BOOSTER

- Positively influences an endocrine gland Thymus, strengthening the immune system
- Reinforces the body’s defence system
- Stimulates regenerative and reparative processes in all biological structures It could help in the health conditions: herpes (cold sores, cold sores, shingles).

AS GLAUCOMA HEALING REMEDY

- For glaucoma prevention and post-operative treatment of glaucoma (open eyes exposure, with the duration of 15 min. at the 40 cm distance)

AS STRESS RELIEF REMEDY

- Relaxes, maintains a dynamic balance between physical and mental energy, loosens tensions
- It has an anti-stress effect providing deep inner peace - helps with Tachycardia or lung distress

BIOPTRON GREEN HYPERLIGHT EXPOSURE ON THYMUS GLAND:

For STRESS FREE LIFE & good health: daily treatments recommended with the duration of 15 minutes.

MEDICAL BIOPTRON HYPERLIGHT FILTER - BLUE

(WAVELENGTH INTERVAL 405-510 nm)

A medical light with **antiseptic**, **antibacterial** and **anti-inflammatory** properties. It can be used as an option for those who cannot tolerate antibiotics.

Blue hyperlight therapy might help in following:

CIRCADIAN RHYTHM REGULATION

BIOPTRON BLUE Hyperlight enters through your eyes and stimulates sensory cells (photosensitive Retinal Ganglion Cells (ipRGCs)). When your (closed) eyes are exposed to BLUE Hyperlight, it signals your body to wake up by suppressing the level of melatonin. As a result, you will feel more energized and active in a natural way.

By being exposed to BIOPTRON BLUE Hyperlight daily, about 20 minutes in the morning hours, your body rhythm will be optimized. As an effect, your energy levels and your sleep patterns will be very well balanced, thus:

- Improved mood
- More energy throughout the day
- Better sleep at night
- JET LAG CONDITION: when exposed 15 min. on one particular biological bioactive zone, behind the knees, BLUE Hyperlight **resets the biological clock**. This application may be helpful whenever the body needs to adjust to different time-zones or for shift work.





BLUE HYPERERLIGHT IN AESTHETIC MEDICINE & DERMATOLOGY

BLUE VLPL as a medical monochromatic light has anti-inflammatory properties and it could cure:

- Ulcers, warts, fungus, psoriasis, acne vulgaris, rosacea, inflammations, skin eruptions from chicken pox and measles, herpes and burns.
- Such particular wavelength & frequency improves the symptoms of psoriasis, especially erythema. It decreases inflammatory cytokine (IL-1alpha) production. In some skin diseases like psoriasis, acne, and keratosis, immune cells at the baseline layers of the skin contribute to worsening symptoms. These cells (T cells) increase local inflammation and promote the formation of keratin (keratinocytes); producing new cells, and in this way enhancing the healing processes

BIOPTRON BLUE HYPERLIGHT EXPOSURE:

(In the morning hours only)

BEAUTY TREATMENTS:

once or twice a day: 10 min. BLUE Hyperlight & 5 min. ORANGE Hyperlight

DERMATOLOGY TREATMENTS:

Expose the affected area to BLUE HYPERLIGHT 2 x per day, with the duration of 20 min.



BIOPTRON BLUE Hyperlight eliminate acne causing bacteria and calm the inflammation, helping to shrink the sebaceous glands that produce excess oil that clogs skin pores.

WOUND HEALING TREATMENT

Blue Hyperlight Accelerates wound healing and tissue repair. **Accelerates healing of burns** and has a cooling and soothing effect.

JAUNDICE TREATMENT

In newborns, breaking down bilirubin into products that are easily eliminated. Applications with control phototherapy (eye patches recommended) as previously discussed and agreed with GP.

BIOPTRON HYPERLIGHT EXPOSURE RELATED TO THE ABOVE HEALTH CONDITIONS:

Treatment: Expose the affected area as it follows: BLUE HL 6 min, ORANGE HL 3 min. GREEN HL 6 min.

Exposure to the blue light in the afternoon and at night has a negative effect disrupting the circadian rhythm. When using it for a long period of time, on a daily basis, APPLICATIONS ONLY IN THE MORNING HOURS.





DENTISTRY, ADJUVANT ORAL TREATMENT

In patients with parodontium - dental orthodontic diseases, BIOPTON BLUE Hyperlight efficiently fights oral infections and inflammation **stimulating elastin and collagen production for faster oral healing. Destroys bacteria that cause diseases in teeth and gums** (Porphyromonas gingivalis).

Clinical studies have shown that Blue HL applied into the oral cavity for 10 minutes during 5 consecutive days **significantly reduces plaque formation**, positively influences immune cells (T lymphocytes for cell immunity), increases local concentration of immunoglobulins (B lymphocytes for humoral immunity) and stimulates the proliferation of fibroblasts for the formation of collagen and stimulated angiogenesis (the formation of new blood vessels).

CONCLUSION:

Blue Hyperlight has **antibacterial and antiviral action**, it **accelerates healing processes** after oral surgery, supports the periodontal regeneration process after clinical therapy (periodontal disease and dental plaque), **reduces swelling, increases tissue regeneration, assists in orthodontal pain reduction.**

BIOPTON HYPERLIGHT EXPOSURE:

Oral treatment: +-15 min.

BIOPTRON HYPERLIGHT FILTER - INDIGO

(WAVELENGTH INTERVAL 450-490 nm)

Indigo is a cold colour and as a result can be used in all conditions involving heat in the body. It has a relaxing effect on the mind and body.

BIOPTRON Indigo HL restores imbalances related to the pineal and the pituitary glands.

Indigo hyperlight therapy might help in following:

AS SINUSITIS CURE

(chronic and acute condition) - INDIGO HL is an astringent, it shrinks tissues and dries up nose secretion and relieves sinus congestion.

BIOPTRON HYPERLIGHT EXPOSURE:

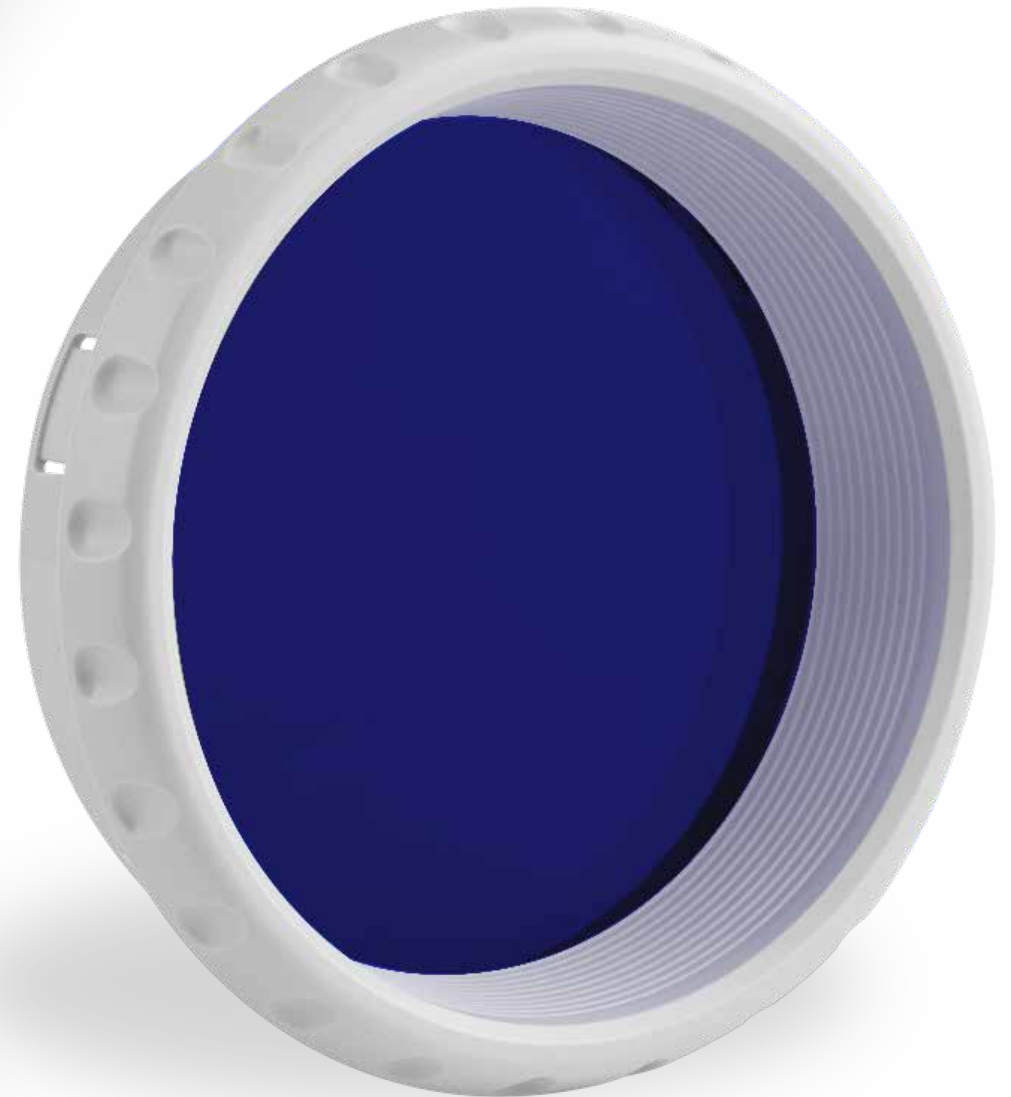
Treatment: WHITE HL 6 min, INDIGO HL 6 min, YELLOW 3 min.

The treatments are recommended to be performed on a daily base, once or twice a day, until the symptoms resolves.

AS TEMPERATURE SUPPRESSANT

BIOPTRON HYPERLIGHT EXPOSURE:

Treatment: INDIGO HL 10 min. The treatments are recommended to be performed on a daily base, once or twice a day, until the temperature is regulated.





AS APPETITE SUPPRESSANT

- weight loss effect

BIOPTRON HYPERLIGHT EXPOSURE ON SOLAR PLEXUS:

Treatment: GREEN HL 3 min, INDIGO HL 10 min, YELLOW HL 1 min.
GREEN HL 1 min.

and/ or:

VIOLET HL exposure 6 min, YELLOW HL 1 min (each ear).

OR CHRONIC AND ACUTE HEARING CONDITIONS

BIOPTRON HYPERLIGHT EXPOSURE:

Treatment: expose first the left ear and then the right one: WHITE HL 3 min, INDIGO HL 6 min, YELLOW 1 min.

The treatments are recommended to be performed on a daily base, once or twice a day.



BIOPTRON HYPERLIGHT FILTER - VIOLET

(WAVELENGTH INTERVAL 400-450 nm)

Violet is a cooler colour so has a **soothing and calming effect**. Violet Hyperlight balances Pineal gland, Hypothalamus, Cerebral cortex and Pituitary gland function. It **helps soothe the nervous system and mental functions**.

Violet hyperlight therapy might help in following:

BIOPTRON HYPERLIGHT EXPOSURE:

Treatment: Expose the forehead area to the VIOLET HL with the duration of 10 min. After that apply 5 min WHITE HL

AS ANXIOLYTIC

- **Relaxes the nerves and soothes nervous irritation, calms** the central nervous system, fights irritability and assist in recovery from nervous breakdowns, nervous or nerve-related conditions or ailments

BIOPTRON HYPERLIGHT EXPOSURE:

Treatment: VIOLET HL 5 min. WHITE HL 5 min and VIOLET HL 5 min.

AS SLEEPING REMEDY

- Fights sleep deprivation (insomnia)





AS MENTAL TONIC

- Reduces sensitivity to light, sound and the environment
- Fights emotional exhaustion
- Fainting

AS SCALP THERAPY

- Dandruff
- Seborrheic Dermatitis
- Cradle Cap, Headlice
- Ringworm
- Folliculitis

BIOPTRON HYPERLIGHT EXPOSURE:

Treatment: the top of the head should be exposed to the VIOLET HL 10 min, YELLOW 5 min.

AS ANTI-CELLULITIS TREATMENT

BIOPTRON HYPERLIGHT EXPOSURE:

Treatment: Expose the affected areas to the VIOLET Hyperlight once a day, duration: 15 min.

MEDICAL BIOPTRON HYPERLIGHT FILTER - WHITE

(WAVELENGTH INTERVAL 400-700 nm)

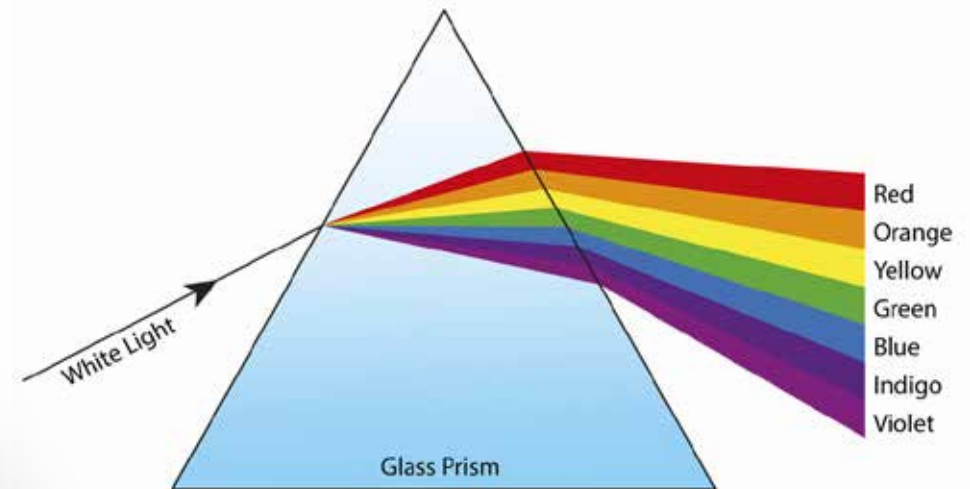
WHITE Hyperlight is recommended in psychotherapeutic treatments, positively influencing the pineal gland and hypothalamus. Due to its thermo-sensory and opto-sensory stimulation, it has sensory and neural effects, it acts efficiently as a **nerve tonic**, reducing the symptoms of seasonal affective depressive disorder (SAD) and nonseasonal depression.

Medical white hyperlight antidepressant is an endorphin stimulant. It could help in following health conditions:

- Burnout – strengthens the nerves and the mind
- Depression – mild depression and melancholy, lack of motivation, poor self-esteem
- Seasonal affective disorder (SAD) – a type of depression that strikes in the fall and winter, BIOPTRON WHITE Hyperlight is designed to mimic outdoor light, improving general mood and to ease negative symptoms of the “winter blues”

BIOPTRON HYPERLIGHT EXPOSURE:

Treatment: Exposure to BIOPTRON WHITE Hyperlight for a brief period in the morning will help overcome feelings of lethargy (fatigue, related to adrenal gland problems). It has an intensity of more than 10,000 Lux. A daily treatment of 30 minutes is considered effective. The symptoms improve within just a few days. In some cases, though, it can take two or more weeks.



BIOPTRON White Hyperlight is defined as the complete mixture of all of the wavelengths of the visible spectrum. Thus, the combination of all of the colours results in a beam of white light.

QUANTUM DIAGNOSTIC RESULTS

The outcomes from the quantum experiments, with BIOPTRON VLP monochromatic lights, have revealed that such lights have an enorm worthy impact on body and mind. After only 15 minutes to their exposure, important modifications in the body occure, at the quantum level:

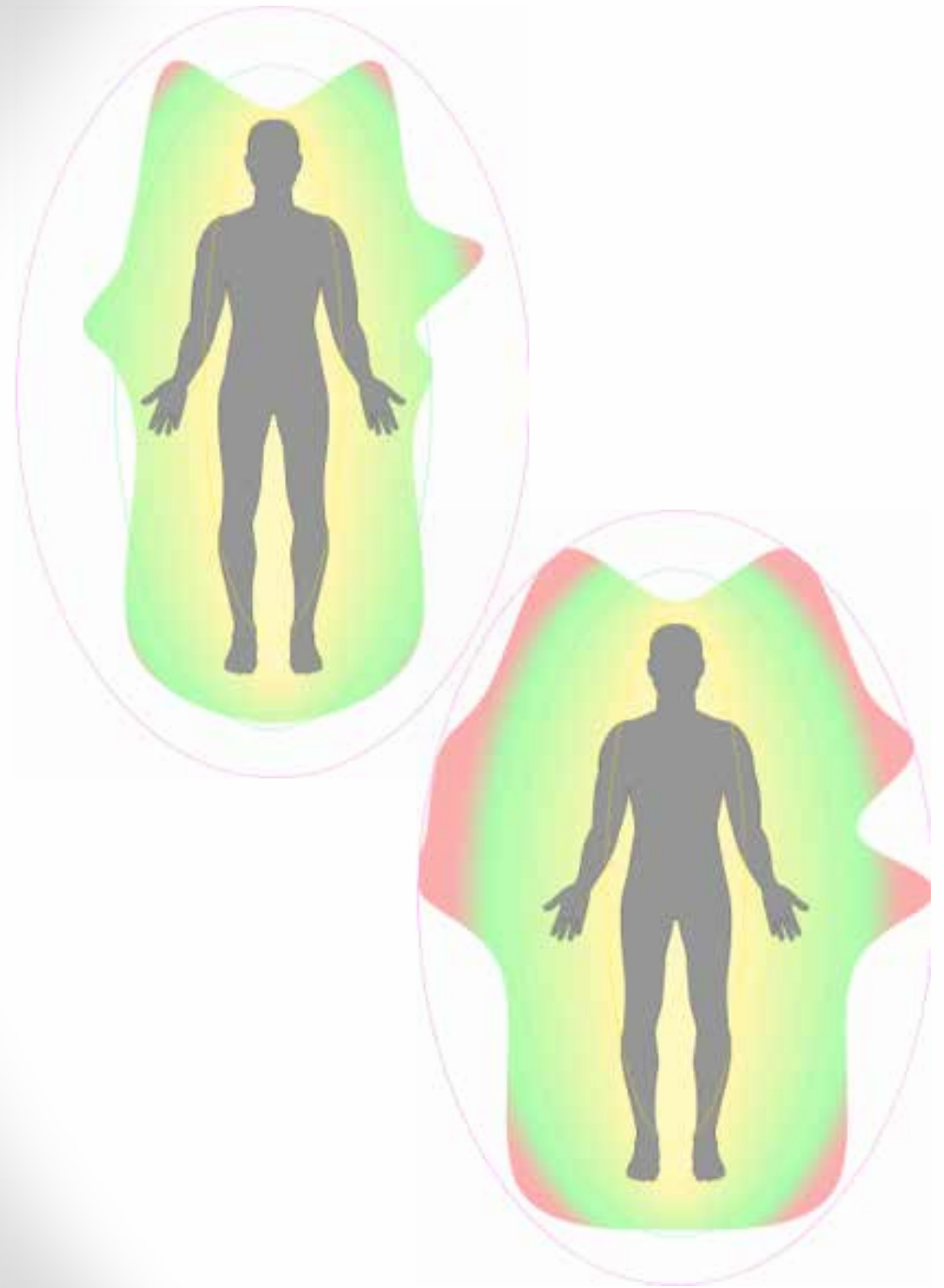


Stress index measures 244 c.u. represent the state of distress and energy imbalance. During a long-term preservation of such energy deficiency, development of the acute condition of a chronic disease is possible. In this unhealthy condition, the body spends an excessive amount of vital energy to maintain its optimal functioning. After the BIOPTRON GREEN Hyperlight treatment with the duration of 15 minutes, the cortisol hormone secretion (stress hormone) significantly decrease and the serotonin hormone secretion (happiness hormone) increases: the stress level is reduced from 244 measure-unites (that is unhealthy for the entire health system), to the optimal 148 measure-unites, required for the ideal body functioning. The adaptation level of 56 % represents a high cost of adaptation associated with the course of a stressful period of life and/or the underlying disease. Energy costs for the optimal functioning of the body are escalated. This health condition can provoke exacerbation of the chronic diseases. After the GREEN Hyperlight exposure, the adaptation level changes to 47 % representing the conditional norm. The body mechanisms of spending and saving energy are optimized, for the good functioning of the entire organism. The Health level increases from 75 % percent to 85 % representing balanced and a healthy body-system.

- STRESS-FREE body & relaxed mind
- Increased energy & better work abilities
- Enhanced & improved general health condition
- Positive influence on the rate of biological aging has been influenced, so we feel and look younger!

Results of the Electromagnetic Field (EMF) before and after BIOPTRON Colour Hyperlight exposure have revealed the following:

- a. The EMF before BIOPTRON Colour lights exposure is very small in size, indicating **some energies stagnation in the organism and a predisposition to certain diseases.**
 - b. After 15 minutes exposure to BIOPTRON Colour Hyperlights, the **specific BIOPTRON monochromatic colour-frequencies** encourage energy flow within the body organs, creating a coherent energy field, **establishing the balance in the disturbed energies in cells and organs. This increased EMF is representing the energized body and stress free person, thus the healthy organism.**
- *Quantum diagnostic experiment is obtained using Veda Pulse quantum diagnostic device, which is an objective accurate pulse diagnostic examination system. It provides broad analysis of the body's functional state.*
 - *45 year old female was examined, healthy and not under medical treatment.*
 - *The analyze is obtained before exposure to GREEN BIOPTRON HYPERLIGHT (Green Vertically linearly Polarized monochromatic light) and after 15 minutes exposure to GREEN BIOPTRON HYPERLIGHT.*
 - *GREEN Hyperlight was applied on sternum.*
 - *The scales show measurements of the STRESS LEVEL in the organism before and after one BIOPTRON Hyperlight treatment.*
 - *This quantum analyze is completed by Dr. Oleg Sorokin, immunologist and Olja Lopushansky, naturopath.*





*"I am part of a light, and it is the music. The Light fills my six senses:
I see it, hear, feel, smell, touch and think. Thinking of it means my sixth sense.*

Particles of Light are written note..."

Nikola Tesla

REFERENCES

1. Liberman J, Light: Medicine of the Future
2. Gulyar S, Anthology of the light therapy
3. Shargorodskaya I.V, Influence of New Green Light Filters on the Hydrodynamics of Glaucomous Eyes
4. Gulyar S.A., Limansky Yu.P., Tamarova Z.A. Color therapy of pain. Treatment of pain syndromes with coloured polarized light
5. Koruga Dj, Hyperpolarized light
6. Tamarova Z.A., Limansky Yu.P., Gulyar S. A. Antinociceptive effects of colour polarized light in animal formalin test model Fiziol.
7. Martel A, Light therapies - a complete guide to the healing power of light
8. Gimbel T, Colour therapy
9. Mandel P, Esogetics - The Sense and Nonsense of Sickness and Pain
10. Hulke W.M, Das Farben Energiebuch
11. Amber R, Colour Therapy - healing with colour
12. Timmerman P, De verborgen kracht van licht en kleur
13. Donald E. Ottens, Dr. Don, Als De Lichten Dimmen, cliniquedokterdon.nl

BIOPTRON® Switzerland



“ We create all our products with one goal in mind — to help you live well, and live longer. ”

Philip Zepter
President of Zepter International



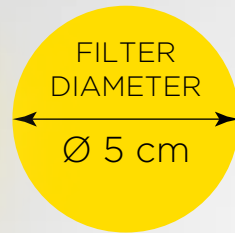


BIOPTRON PRODUCT PRICES

BIOPTON MEDALL

BIOPTON MEDALL: LIGHT THAT HEALS

PAG-960



€ 1160.00

RETAIL PRICE

€ 1044.00

MEMBER PRICE

JOIN

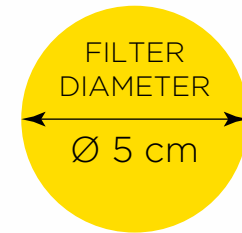
CLUB
LIVE
100

BIOPTON COLOR LIGHT THERAPY SET

FOR BIOPTON MEDALL

THE COMPLETE SET FOR BODY AND MIND

PAG-965-CT



€ 577.00

RETAIL PRICE

€ 519.30

MEMBER PRICE

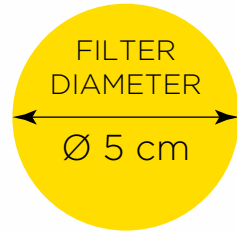
JOIN

CLUB
LIVE
100

**Please note, prices vary from country to country. Please visit shop.zepter.com in your country.*

BIOPTRON MEDALL WITH STAND BIOPTRON MEDALL: LIGHT THAT HEALS

PAG-960-SET



€ 1257.00

RETAIL PRICE

€ 1131.30

MEMBER PRICE

JOIN

CLUB
LIVE
100

FLOOR STAND FOR BIOPTRON MEDALL PERFECT ACCESSORY FOR YOUR MEDALL!

PAG-964-FSM



€ 125.00

RETAIL PRICE

€ 112.50

MEMBER PRICE

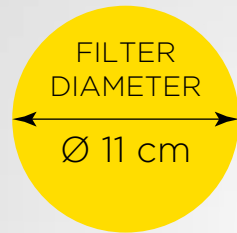
JOIN

CLUB
LIVE
100

**Please note, prices vary from country to country. Please visit shop.zepter.com in your country.*

BIOPTRON PRO1 WITH TABLE STAND THE REVOLUTIONARY BIOPTRON PRO 1

PAG-990



€ 2490.00

RETAIL PRICE

€ 2241.00

MEMBER PRICE

JOIN

CLUB
LIVE
100

BIOPTRON COLOR LIGHT THERAPY SET FOR BIOPTRON MEDALL THE COMPLETE SET FOR BODY AND MIND

PAG-991-FS



€ 250.00

RETAIL PRICE

€ 237.50

MEMBER PRICE

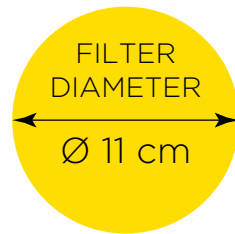
JOIN

CLUB
LIVE
100

**Please note, prices vary from country to country. Please visit shop.zepter.com in your country.*

COLOR HYPERLIGHT THERAPY FOR BIOPTRON PRO1 - RED FILTER

PAG-992-1CTF



€ 111.00

RETAIL PRICE

€ 99.90

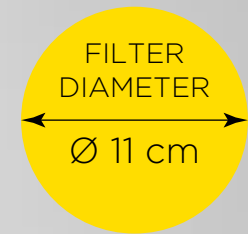
MEMBER PRICE

JOIN

**CLUB
LIVE
100**

COLOR HYPERLIGHT THERAPY FOR BIOPTRON PRO1 - ORANGE FILTER

PAG-992-2CTF



€ 111.00

RETAIL PRICE

€ 99.90

MEMBER PRICE

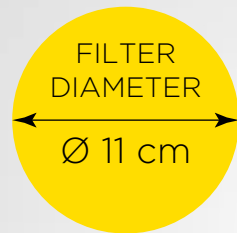
JOIN

**CLUB
LIVE
100**

**Please note, prices vary from country to country. Please visit shop.zepter.com in your country.*

COLOR LIGHT THERAPY FOR BIOPTRON PRO1 - YELLOW FILTER

PAG-992-3CTF



€ 111.00

RETAIL PRICE

€ 99.90

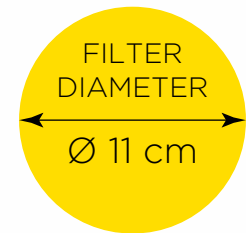
MEMBER PRICE

JOIN

**CLUB
LIVE
100**

COLOR LIGHT THERAPY FOR BIOPTRON PRO1 - GREEN FILTER

PAG-992-4CTF



€ 111.00

RETAIL PRICE

€ 99.90

MEMBER PRICE

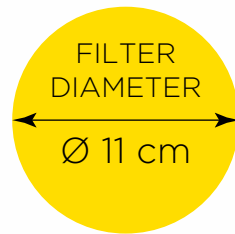
JOIN

**CLUB
LIVE
100**

**Please note, prices vary from country to country. Please visit shop.zepter.com in your country.*

COLOR LIGHT THERAPY FOR BIOPTRON PRO1 - BLUE FILTER

PAG-992-5CTF



€ 111.00

RETAIL PRICE

€ 99.90

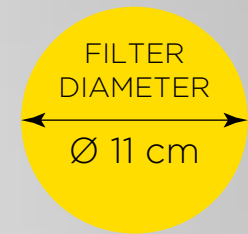
MEMBER PRICE

JOIN

CLUB
LIVE
100

COLOR LIGHT THERAPY FOR BIOPTRON PRO1 - INDIGO FILTER

PAG-992-6CTF



€ 111.00

RETAIL PRICE

€ 99.90

MEMBER PRICE

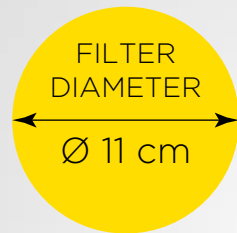
JOIN

CLUB
LIVE
100

**Please note, prices vary from country to country. Please visit shop.zepter.com in your country.*

COLOR LIGHT THERAPY FOR BIOPTRON PRO1 - VIOLET FILTER

PAG-992-7CTF



€ 111.00

RETAIL PRICE

€ 99.90

MEMBER PRICE

JOIN

CLUB
LIVE
100

COLOR THERAPY LIGHT FLUID, 200 ML BIOINFORMED BODY GEL

PAG-863-1



€ 30.00

RETAIL PRICE

€ 28.50

MEMBER PRICE

JOIN

CLUB
LIVE
100

**Please note, prices vary from country to country. Please visit shop.zepter.com in your country.*

COLOR THERAPY BALANCING GEL, 100 ML BIOPTON BIOINFORMED COSMETICS

PAG-863-2



€ 35.00

RETAIL PRICE

€ 33.25

MEMBER PRICE

JOIN

CLUB
LIVE
100

COLOR THERAPY CRYSTAL CREAM, 100 ML BIOINFORMED COSMETICS - NATURE'S POWER FOR MIND AND BODY

PAG-863-3



€ 65.00

RETAIL PRICE

€ 61.75

MEMBER PRICE

JOIN

CLUB
LIVE
100

**Please note, prices vary from country to country. Please visit shop.zepter.com in your country.*

**BIOPTRON OXYGEN STERILE WATER
SPRAY, 250 ML**
**OXY STERILE SPRAY - PURITY FOR FACE &
BODY**

PAG-961-250S



€ 13.00

RETAIL PRICE

€ 12.35

MEMBER PRICE

JOIN

**CLUB
LIVE
100**

BIOPTRON 2 WITH FLOOR STAND
THE PROFESSIONAL CHOICE: BIOPTRON 2
MEDICAL LIGHT THERAPY

PAG-880-SET



FILTER
DIAMETER
Ø 15 cm

€ 11500.00

RETAIL PRICE

€ 10350.00

MEMBER PRICE

JOIN

**CLUB
LIVE
100**

**Please note, prices vary from country to country. Please visit shop.zepter.com in your country.*

BIOPTRON[®] 
HYPERLIGHT THERAPY SYSTEM By Zepter Group

[SHOP.ZEPTER.COM](https://shop.zepter.com)

